



Opportunity Day  
November 18, 2009



## **Asian Insulators Public Company Limited**

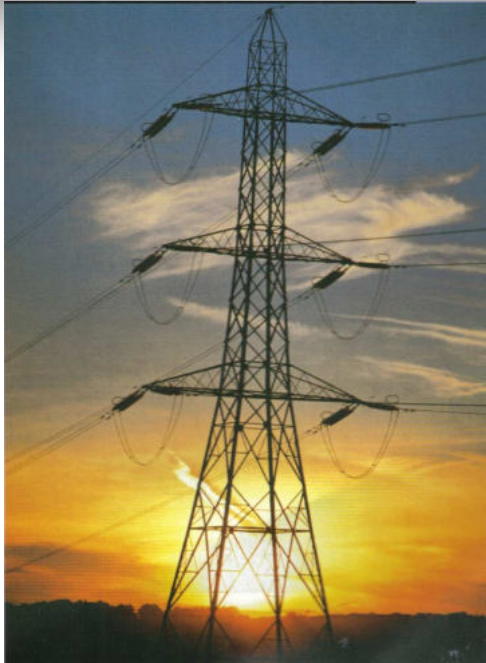
254 Seri Thai Road, Kannayaow, Bangkok 10230 Thailand <http://www.asianinsulators.com>

Tel. (66) 0-2517-1451 Fax. (66) 0-2517-1465 E-mail : [asian@asianinsulators.com](mailto:asian@asianinsulators.com)

# Agenda

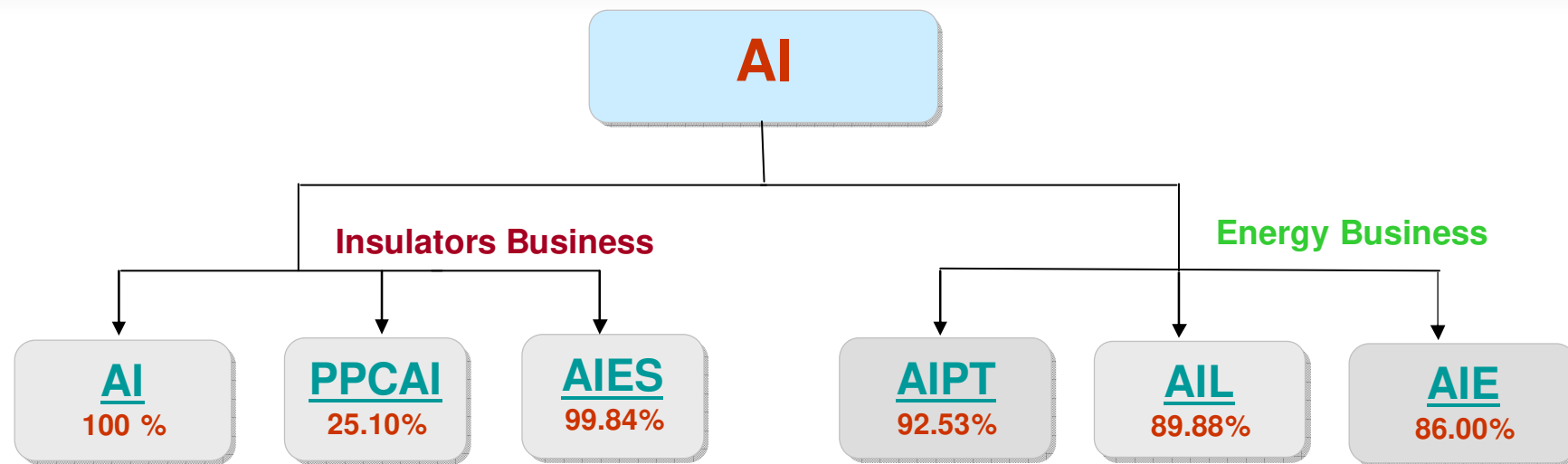


- ✦ Business Overview
- ✦ Consolidated Financials
- ✦ Business unit
  - ✦ Insulators
  - ✦ Engineering
  - ✦ Logistics
  - ✦ Vegetable Oil and Alternative Energy
  - ✦ Ports and Terminals
- ✦ Questions and Answers



**More than half of Porcelain Insulators uses in power transmission and distribution grids are our products. A progressive porcelain manufacturing plant with production flow and state-of-the-art raw materials preparation, pug mills and kilns with ISO-9001 Quality Assurance Program allows for manufacture and marketing of high quality insulators products. Product innovation and improvements, is an industry leader in the design and production of high quality porcelain insulators.**

# Business Overview



- Manufacturer Porcelain Insulators for low, medium and high voltage insulators
- Capacity 12,000 tons



- Manufacturer Porcelain insulators for Europe and North America markets.
- Capacity 3,500 tons



- Engineering contractor for High Voltage Transmission lines and Substations



- Ports and depot services
- Capacity 40 million liters



- Sea and Land Logistics
- Ship Tankers range 500 – 3000 tons gross



- Bio diesel refinery 500,000 liters / day
- Vegetable oil refinery 350,000 liters / day

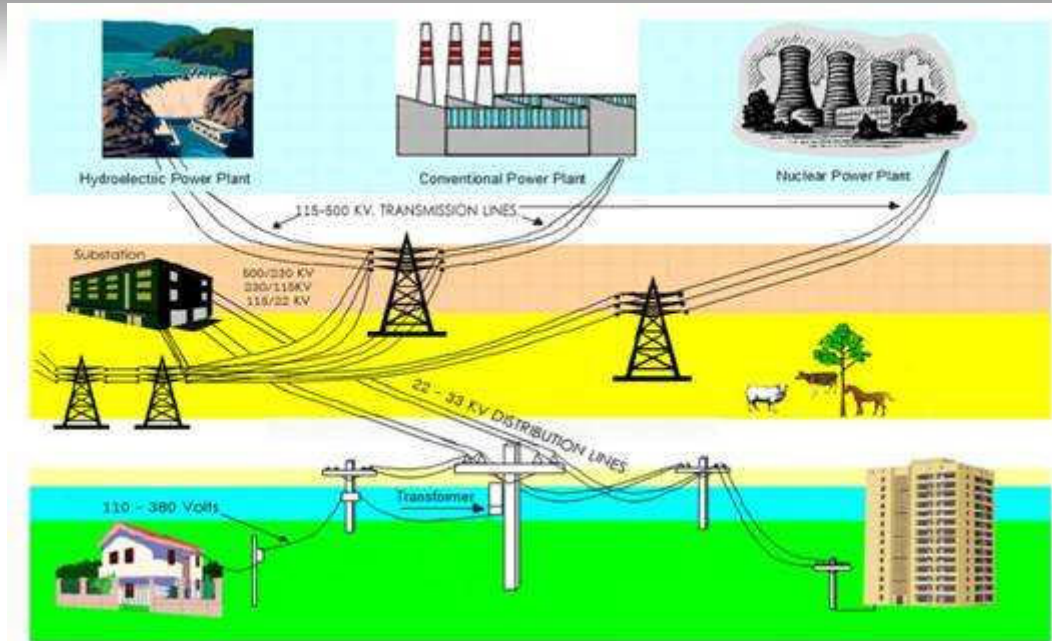


### Highlights

- ✦ AI is the leader in Porcelain Insulators manufacturer with 55% market share in Thailand.
- ✦ AI has 100% market share in high voltage insulators.
- ✦ AI has all Porcelain Insulators products range cover all the requirement from utilities for power transmission and distribution.
- ✦ AI has a progressive porcelain manufacturing plant with production flow and state-of-the-art raw materials preparation, pug mills and kilns with ISO-9001 Quality Assurance Program.
- ✦ AI is one of the leader in Biodiesel refinery with continuous process and vegetable oil refinery for industrials and consumers use, continuously achieves strong growth through alternative energy and vegetable oil.
- ✦ AI has a discipline engineering in design and construction of high voltage transmission lines and substations.
- ✦ AI has a complete logistics and tanks farm to support the alternative energy and vegetable oil business.

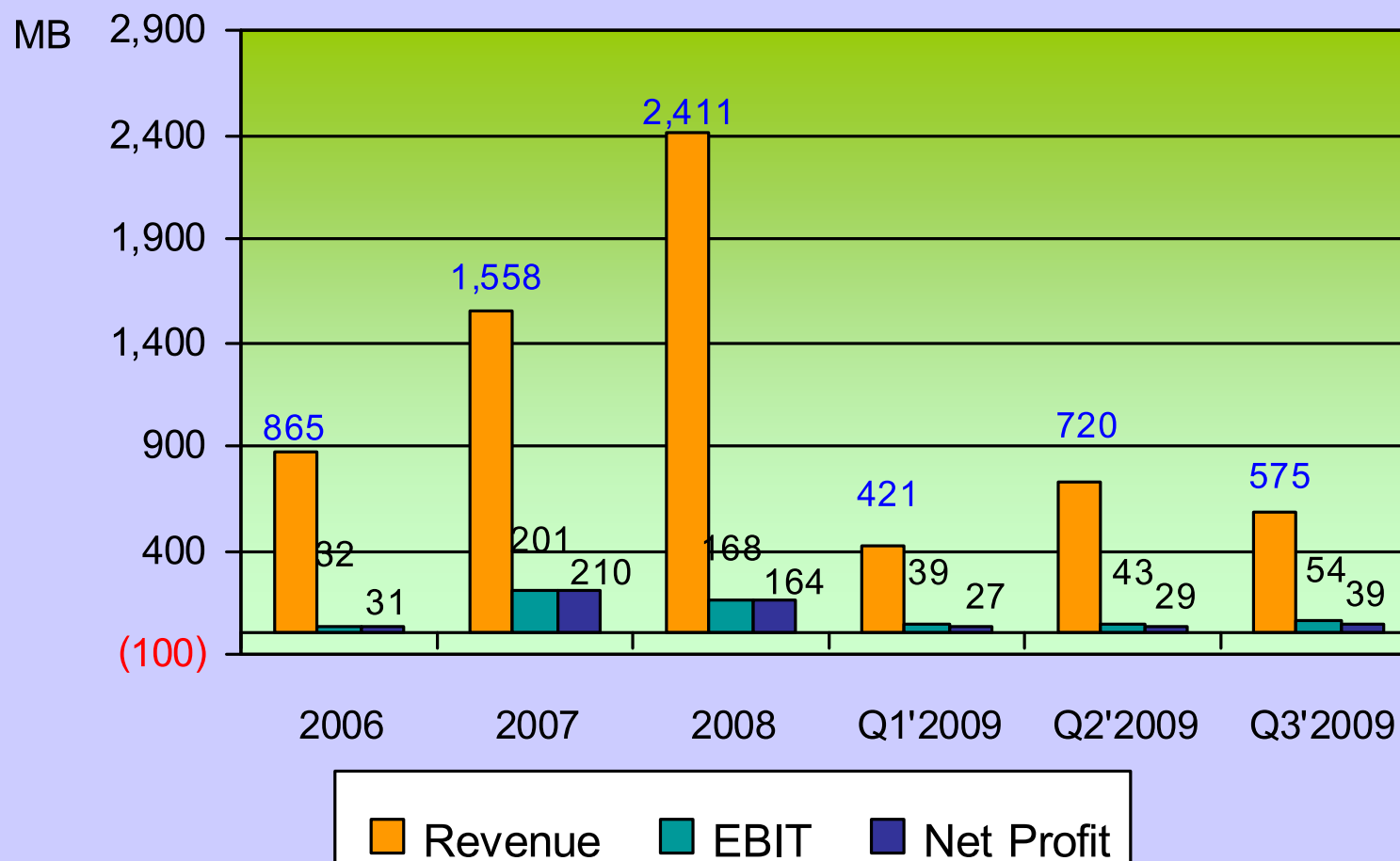


# Power Transmission and Distribution System

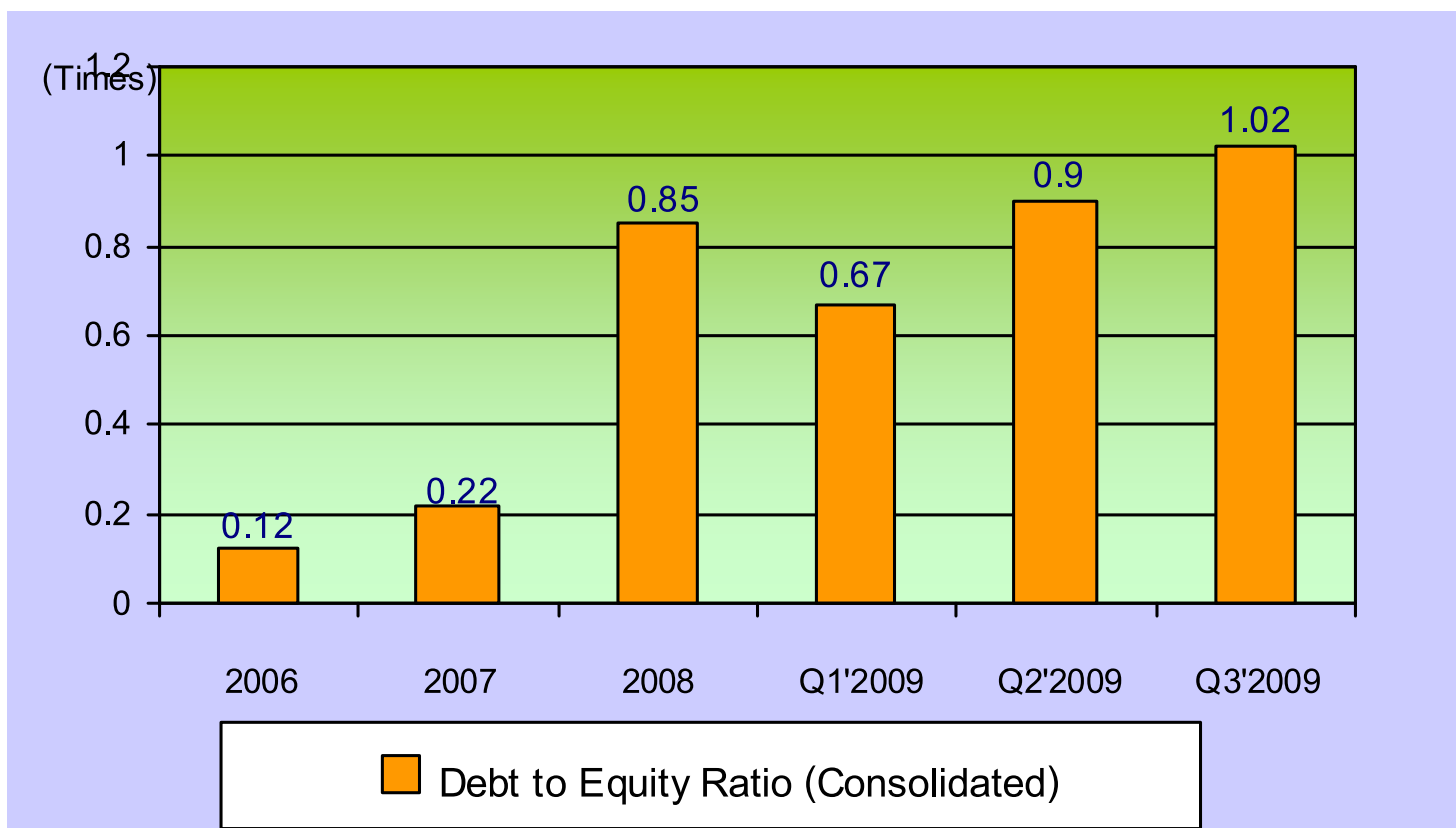


Electrical insulators is one of the essential equipment for the electricity's transmission and distribution systems. It can prevent the electricity leaks from the conductor to the ground which would cause the short circuit and cause the unplanned electricity outage. Another main duty of insulators is to hold and suspend the electrical conductor in the air.

# Performance of AI (Consolidated)

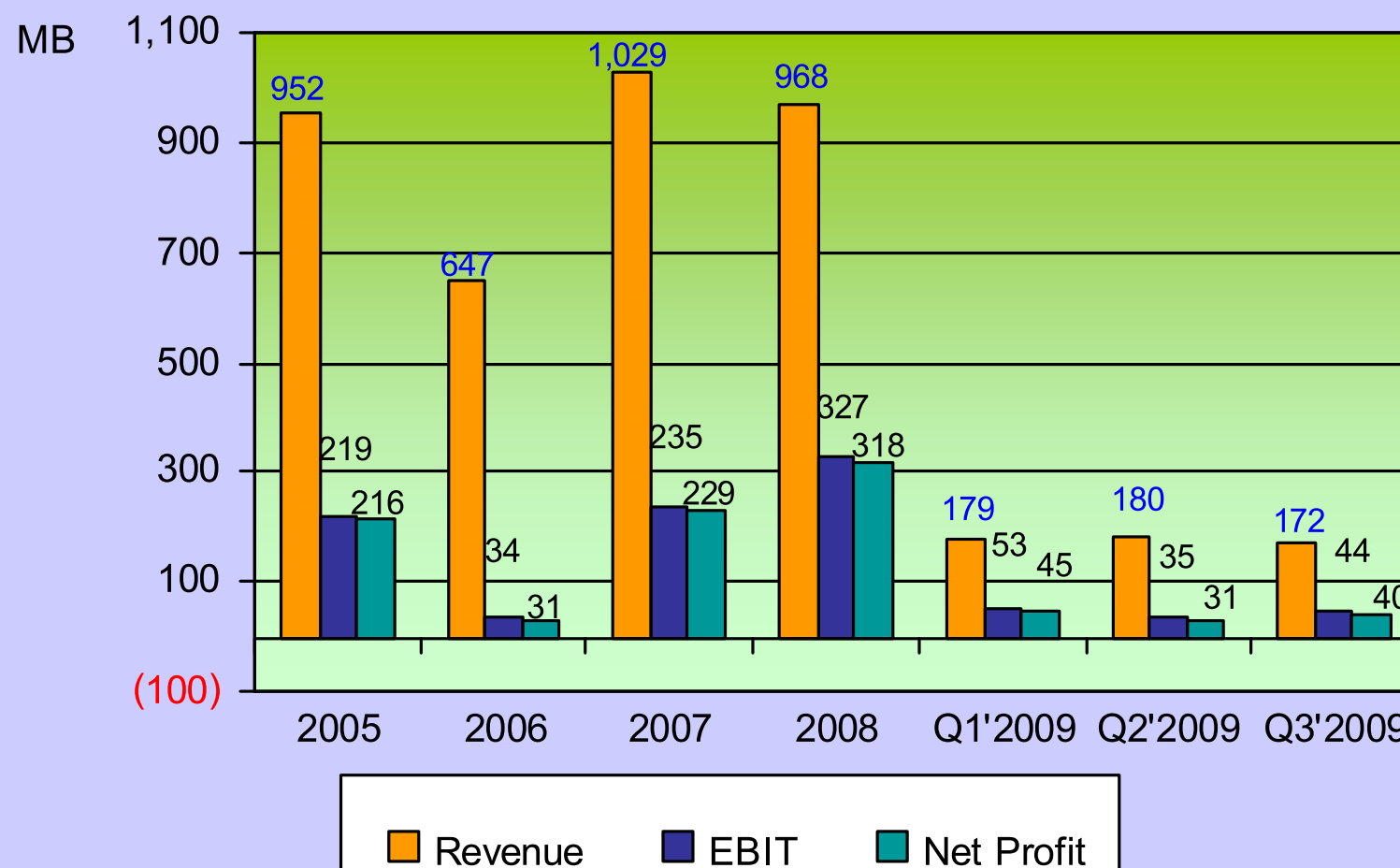


## Consolidated: Debt to Equity





## Insulators: Performance





### 3Q2009 Highlights

- ✚ Lower demand of Porcelain Insulators from Utilities.
- ✚ Power expansion projects has been delayed, and postponed for both utilities and private sector.

### Outlook

- ✚ Recession, but government spending is enforce.
- ✚ Lower demand of Insulators for utilities and private sectors through out year 2009.



# PPC Insulators & Group

**Asian Insulators PLC.**



# PPC Asian Insulators Company Limited



<b>Location</b>	99/9 Moo 2, Asia Highway Rd., Km. 122-123, Banmor,Promburi, Singburi 16120 Thailand
<b>Prod Capacity</b>	3,500 tons per annum
<b>Paid-up Capital</b>	263 million Baht
<b>Stake</b>	25.10%
<b>No. of employees</b>	300 persons.
<b>Investment Privileges</b>	Thailand's Board of Investment incentives (Zone 3), commencing from January. 2005; ✦ Corporate income tax exemption for 8 years and 50% reduction for the next 5 years. ✦ Dividend gained from the business is exempted from the corporate income tax calculation within the 8-years tax exemption period.



## Products.



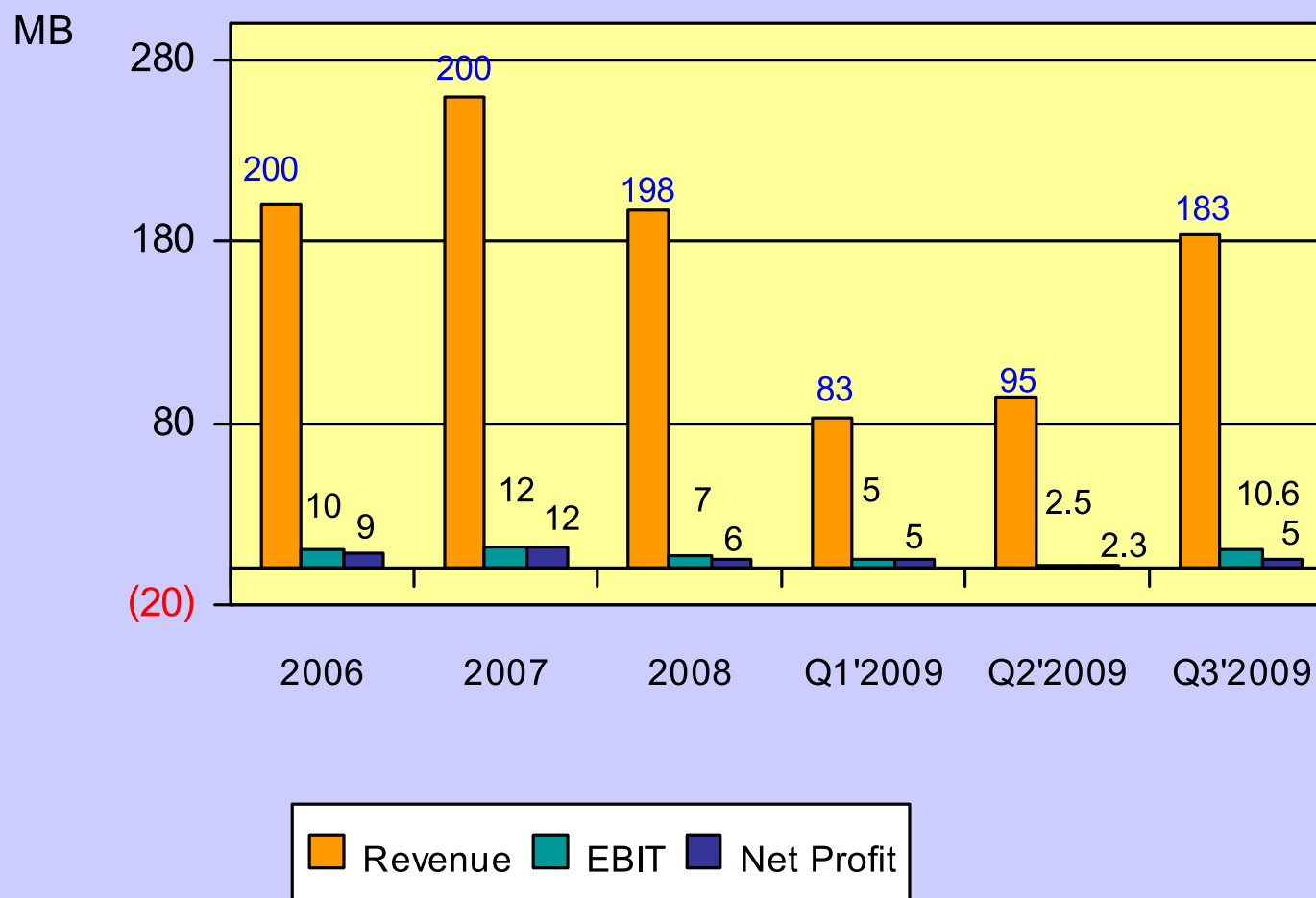


# AI Engineering Services Company Limited





# Engineering: Performance





### 3Q2009 Highlights

- ✚ Construction was slow in progress due to the weather.

### Outlook

- ✚ Backlog for 506 MB of high voltage substations construction.

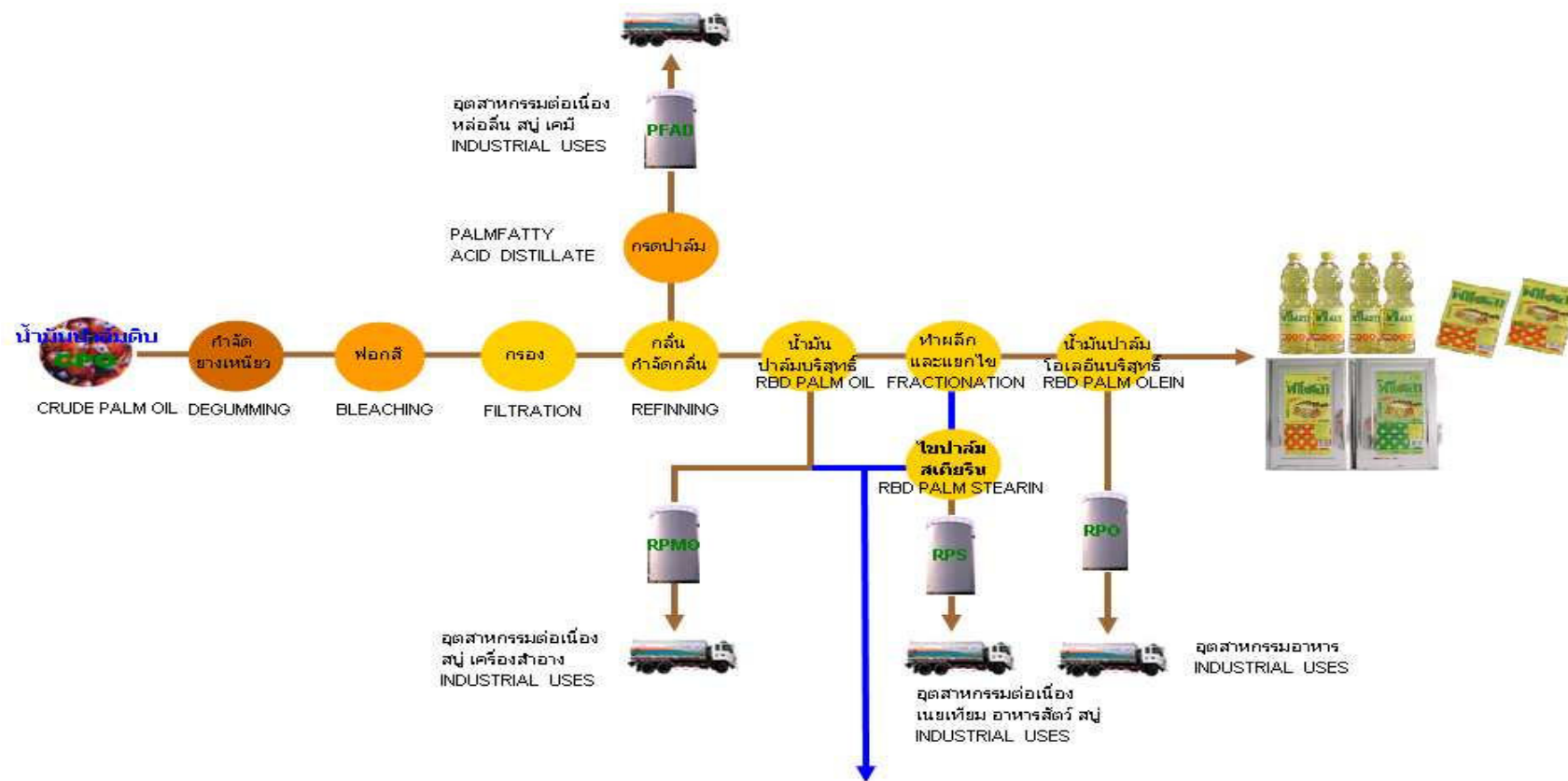
# AI Energy Company Limited



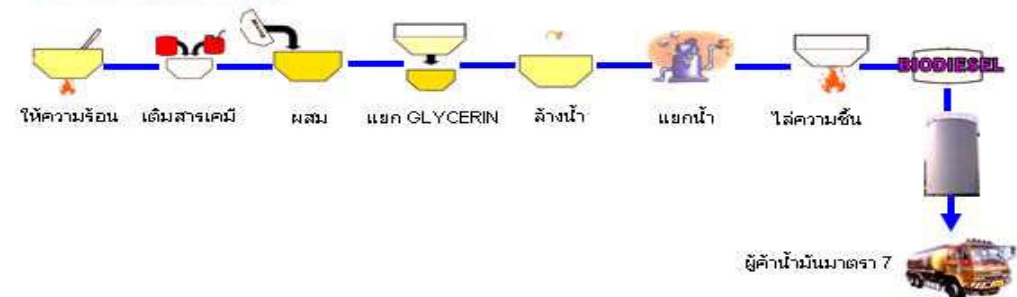
- Vegetable Oil
- Bio Diesel (B100)



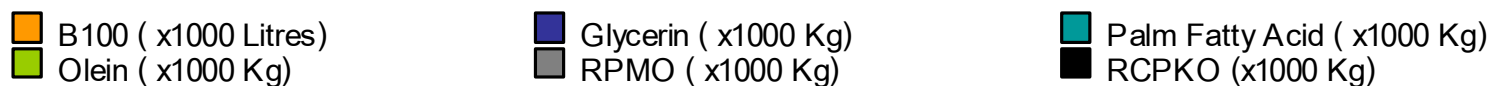
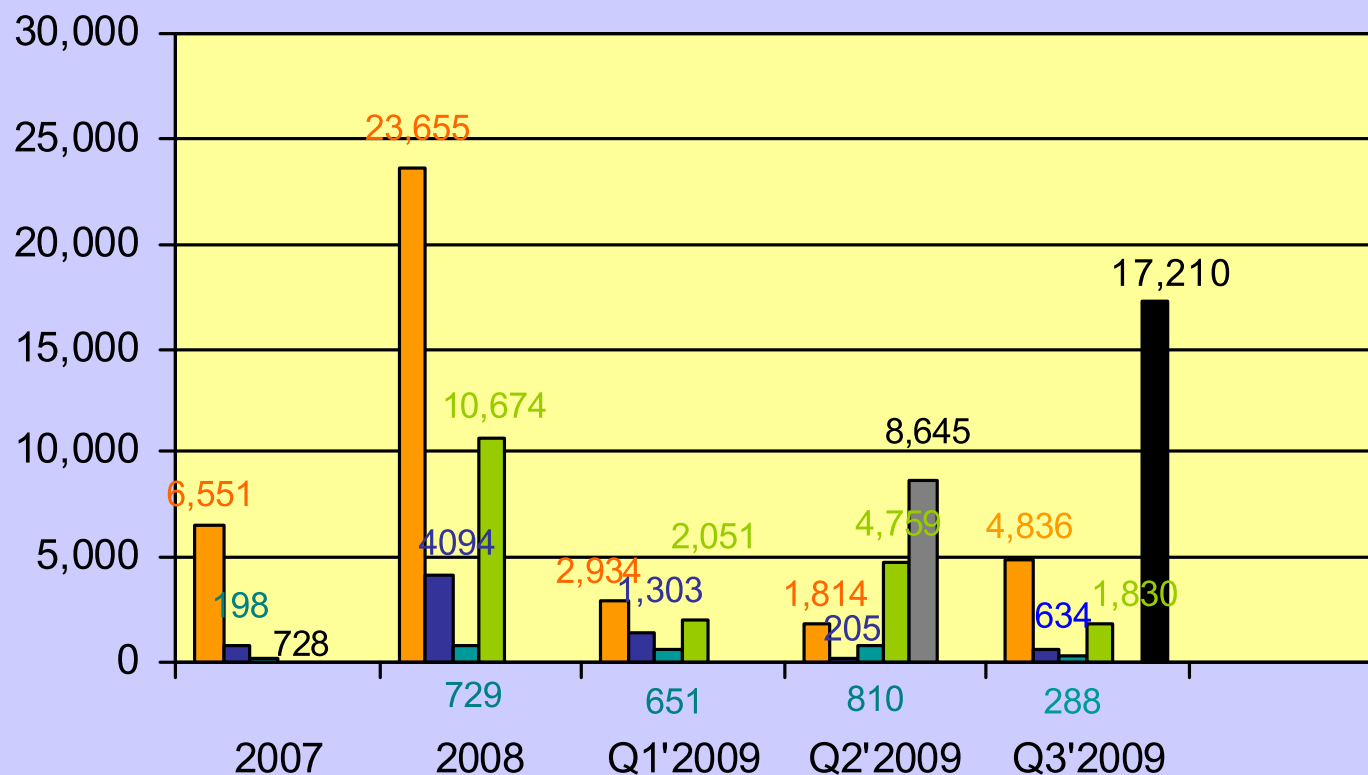
# Bio Diesel and Refined Palm Oil Production Process



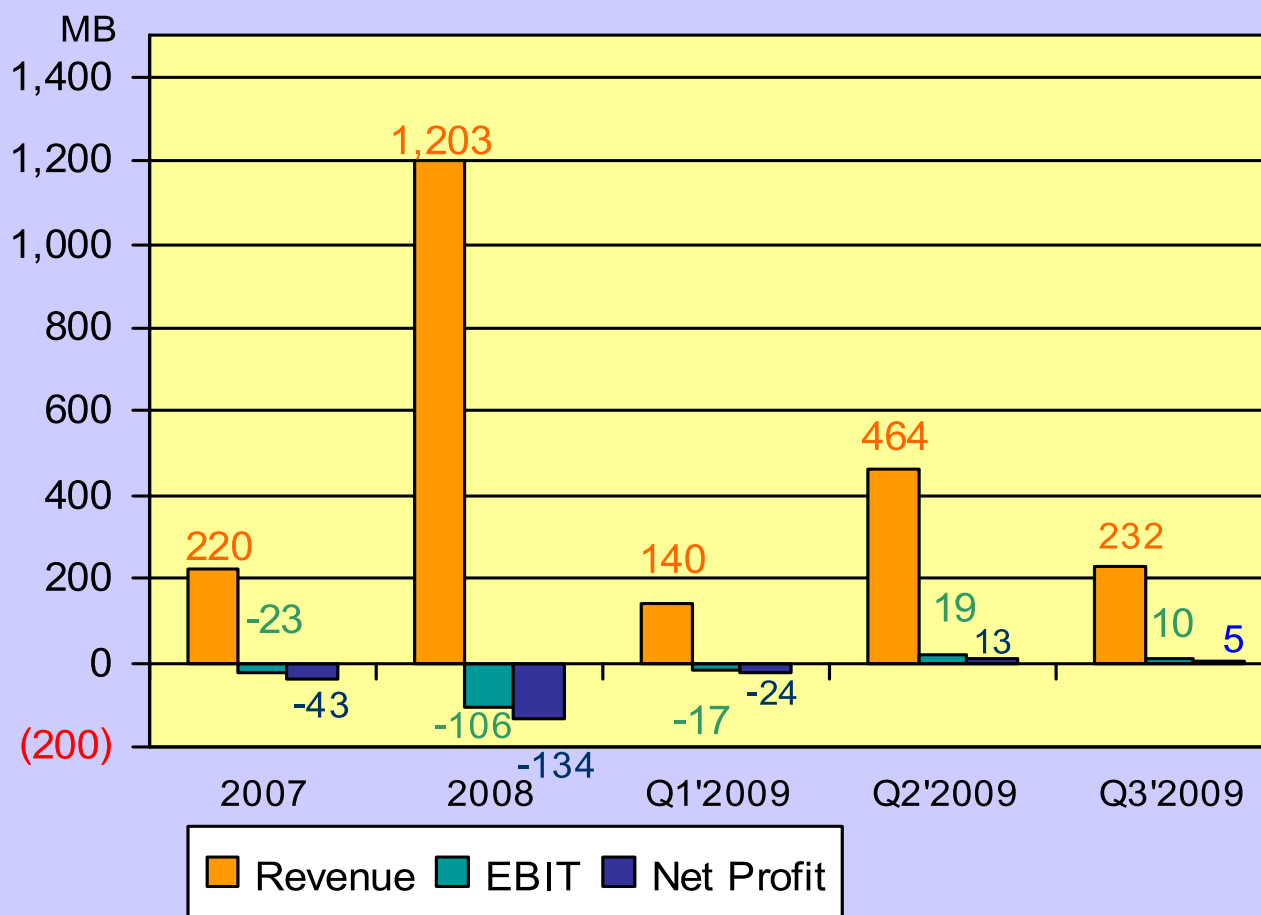
## BIODIESEL PROCESS



# Sales Volume



## Bio Diesel and Vegetable Oil : Performance





# Bio Diesel: Summary



## 3Q2009 Highlights

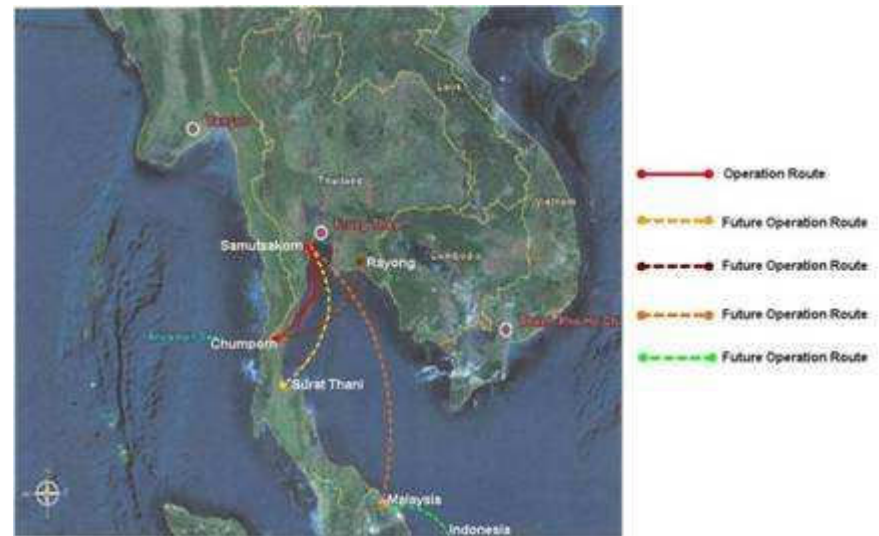
- ✦ The demand of biodiesel (B100) was decreased due to lower demand.
- ✦ More demand of Refined palm oil for industrial use.

## Outlook

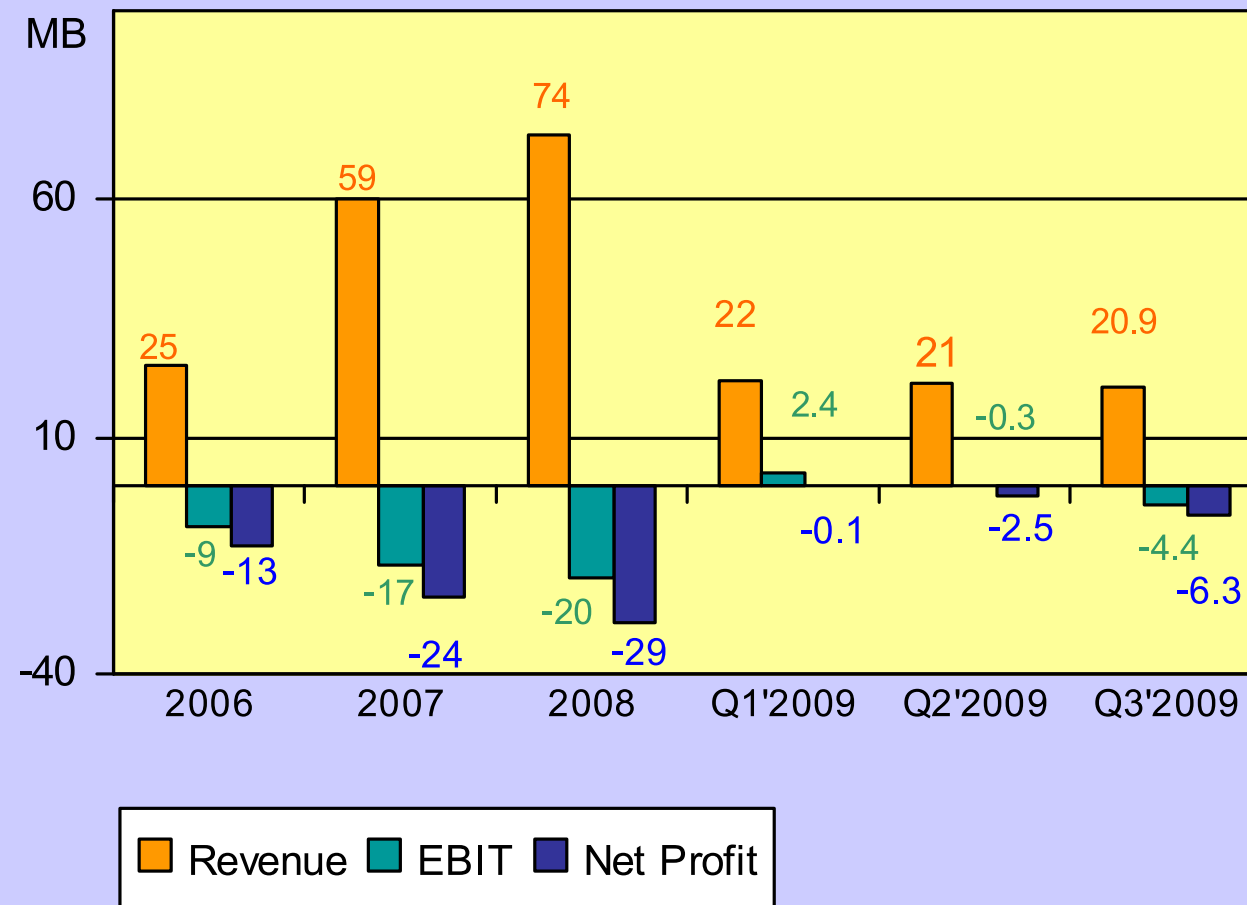
- ✦ The demand of biodiesel (B100) is stable through out the year 2009.
- ✦ More demand of Refined palm oil for industrial use.



# AI Logistics Company Limited



# Logistics: Performance





### 3Q2009 Highlights

- ✦ Lower demand of ship tanker. The utilize capacity about 50% for time charter and freight charge.
- ✦ Preventive maintenance as per schedule.

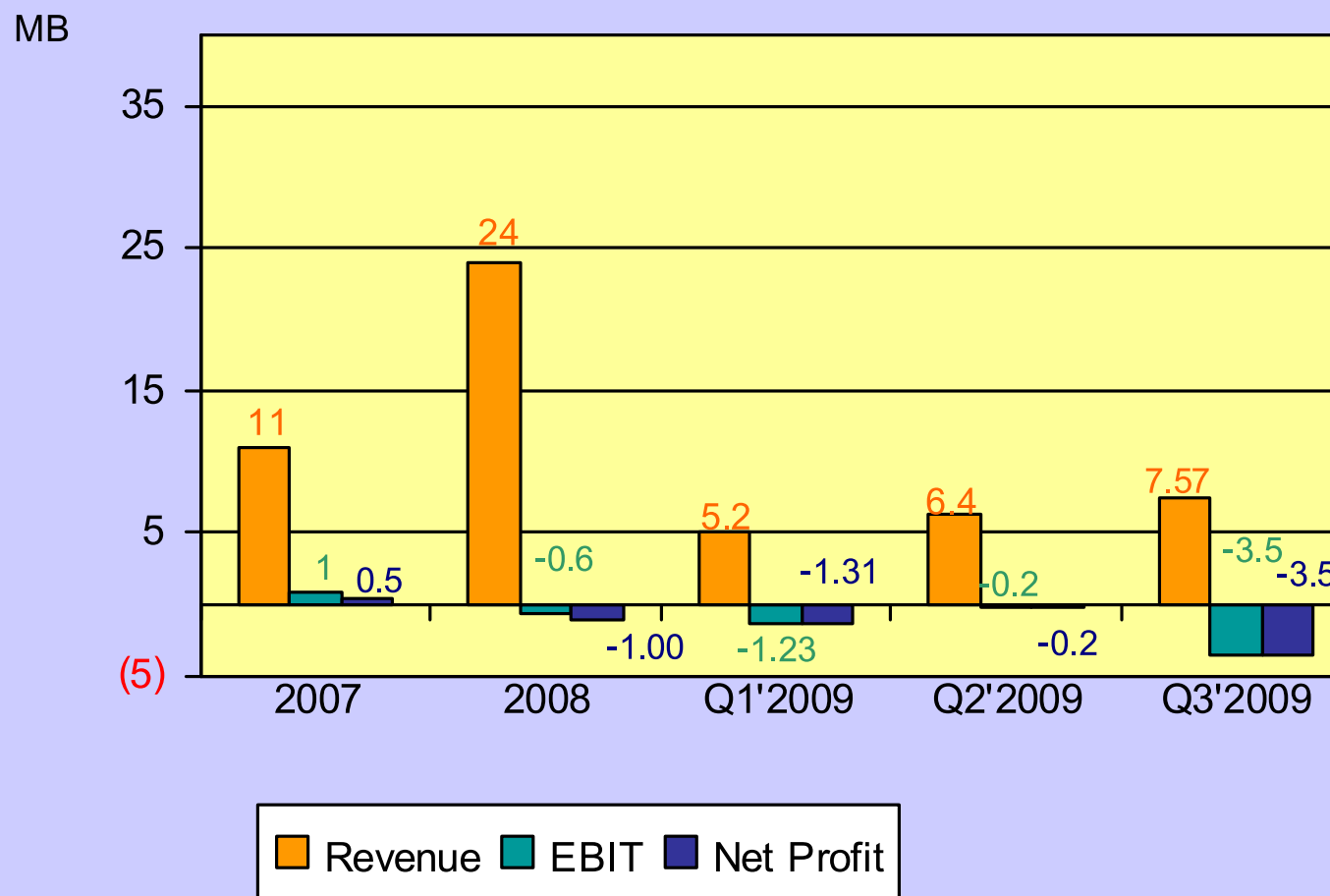
### Outlook

- ✦ Stable utilization rate through out the year 2009.

# AI Ports and Terminals Company Limited



## Ports and Terminals: Performance







### 3Q2009 Highlights

- ✚ Ports services and sell the ice cube to fishing industry at Samut Sakorn province.
- ✚ The construction of tanks farm and port at Samut Sakorn province with 10 million liters capacity of Crude Palm Oil is completed and in operation.
- ✚ The construction of tanks farm and jetty at Chumporn province with 20 million liters capacity of Crude Palm Oil is completed and in operation.

### Outlook

- ✚ Less demand of the Ports services through out the year 2009.



# **Questions and Answers**

**Contact : Khun Thanit Thareratanavibool**

**ir@asianinsulators.com Tel.: 02-517-1451**

**<http://www.asianinsulators.com>**



**The information, statements, forecasts and projections contained herein reflect the Company's current views with respect to future events and financial performance. These views are based on assumptions subject to various risks. No assurance is given that these future events will occur, or that the Company's assumptions are correct. Actual results may differ materially from those projected.**