



Opportunity Day
November 14, 2008



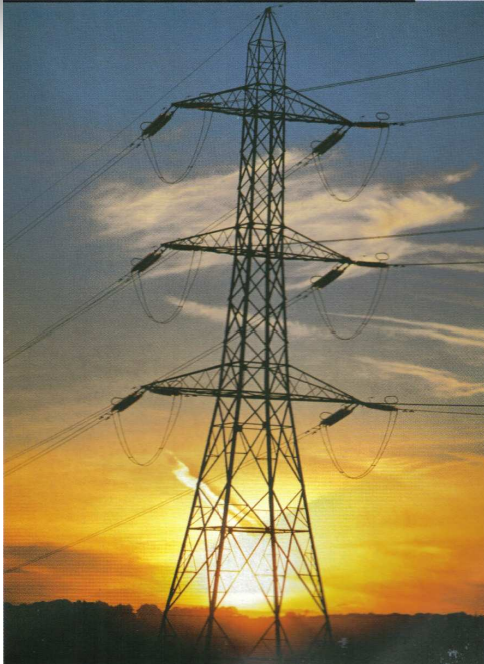
Asian Insulators Public Company Limited

254 Seri Thai Road, Kannayaow, Bangkok 10230 Thailand <http://www.asianinsulators.com>

Tel. (66) 0-2517-1451 Fax. (66) 0-2517-1465 E-mail : asian@asianinsulators.com

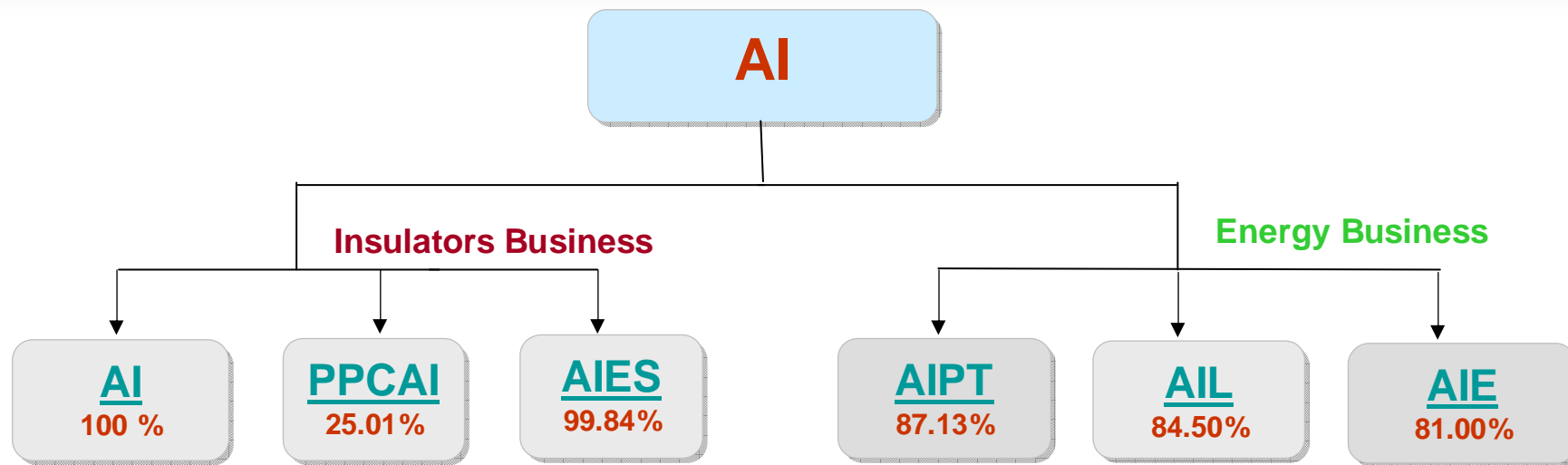


- ✦ Business Overview
- ✦ Consolidated Financials
- ✦ Business unit
 - Insulators
 - Engineering
 - Logistics
 - Vegetable Oil and Alternative Energy
 - Ports and Terminals
- ✦ Questions and Answers



More than half of Porcelain Insulators uses in power transmission and distribution grids are our products. A progressive porcelain manufacturing plant with production flow and state-of-the-art raw materials preparation, pug mills and kilns with ISO-9001 Quality Assurance Program allows for manufacture and marketing of high quality insulators products. Product innovation and improvements, is an industry leader in the design and production of high quality porcelain insulators.

Business Overview



- Manufacturer Porcelain Insulators for low, medium and high voltage insulators
- Capacity 12,000 tons



- Manufacturer Porcelain insulators for Europe and North America markets.
- Capacity 3,500 tons



- Engineering contractor for High Voltage Transmission lines and Substations



- Ports and depot services
- Capacity 40 million liters



- Sea and Land Logistics
- Ship Tankers range 500 – 3000 tons gross



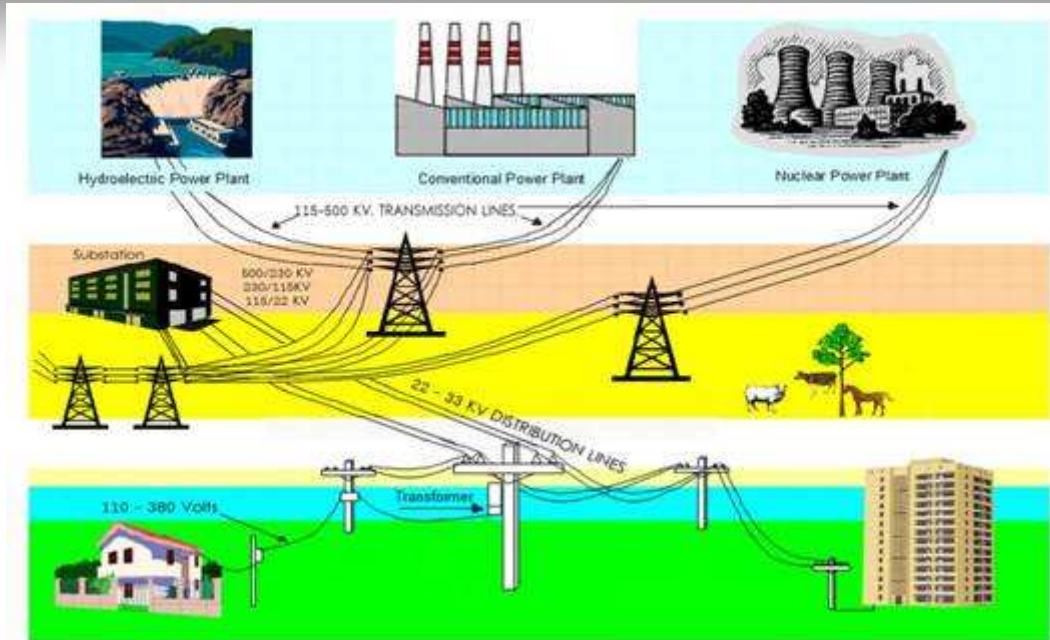
- Bio diesel refinery 500,000 liters / day
- Vegetable oil refinery 250,000 liters / day



Highlights

- ✦ AI is the leader in Porcelain Insulators manufacturer with 55% market share in Thailand.
- ✦ AI has 100% market share in high voltage insulators.
- ✦ AI has all Porcelain Insulators products range cover all the requirement from utilities for power transmission and distribution.
- ✦ AI has a progressive porcelain manufacturing plant with production flow and state-of-the-art raw materials preparation, pug mills and kilns with ISO-9001 Quality Assurance Program.
- ✦ AI is one of the leader in Bio diesel refinery with continuous process and vegetable oil refinery for industrials and consumers use.
- ✦ AI continuously achieves strong growth through alternative energy and vegetable oil.
- ✦ AI has a discipline engineering in design and construction of high voltage transmission lines and substations.
- ✦ AI has a complete logistics and tanks farm to support the alternative energy and vegetable oil business.

Power Transmission and Distribution System

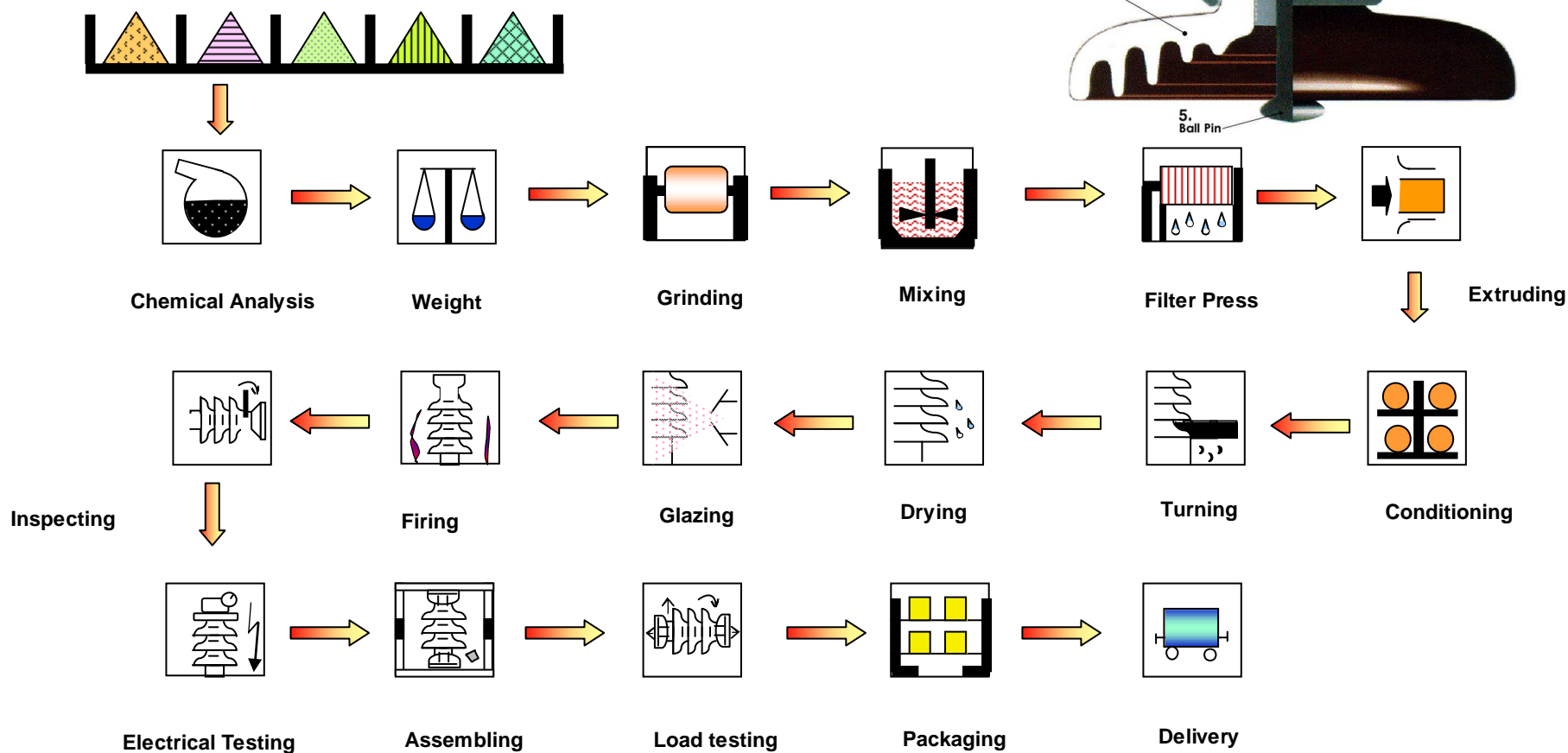


Electrical insulators is one of the essential equipment for the electricity's transmission and distribution systems. It can prevent the electricity leaks from the conductor to the ground which would cause the short circuit and cause the unplanned electricity outage. Another main duty of insulators is to hold and suspend the electrical conductor in the air.

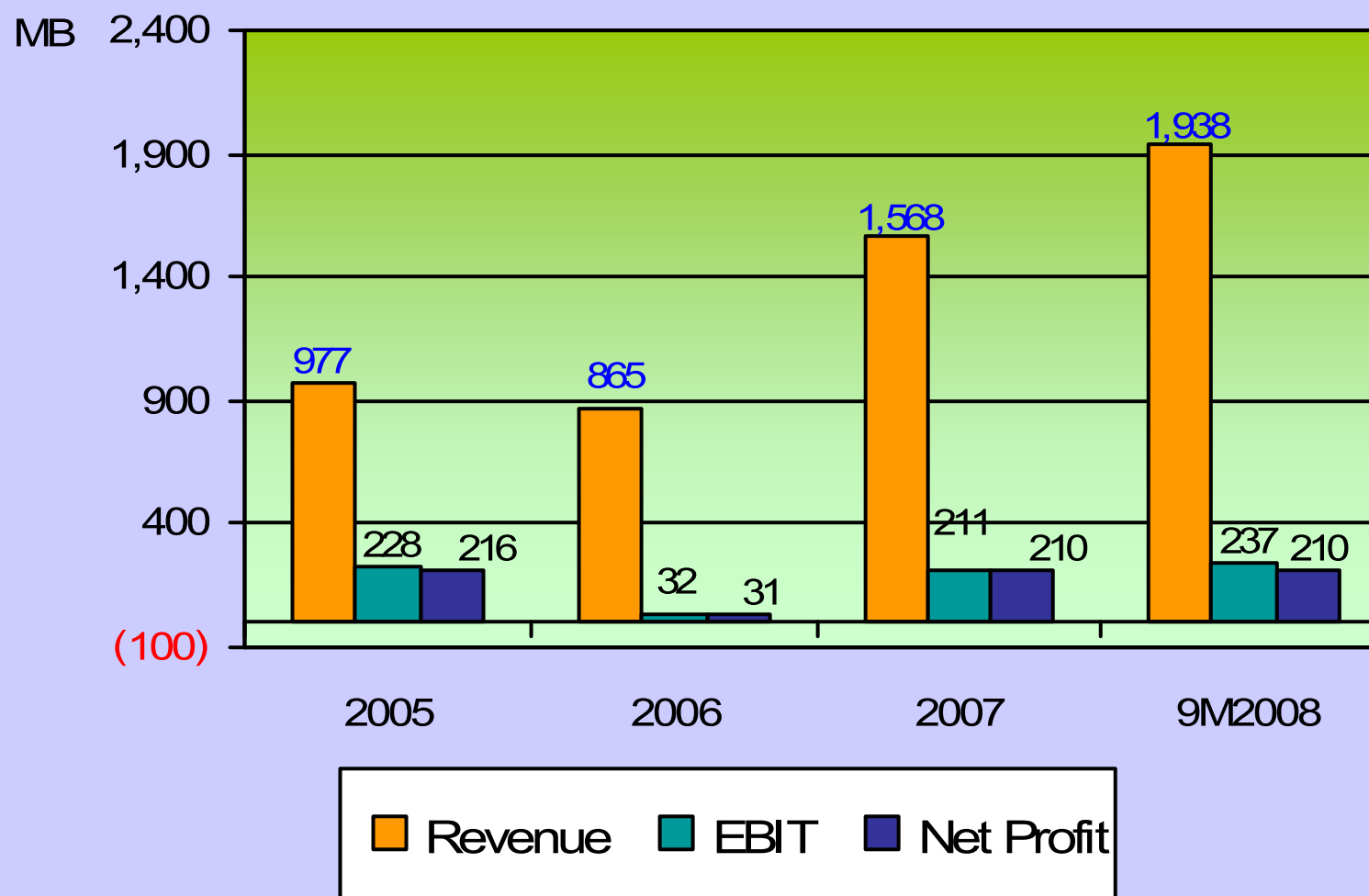
Porcelain Insulators & Production Process



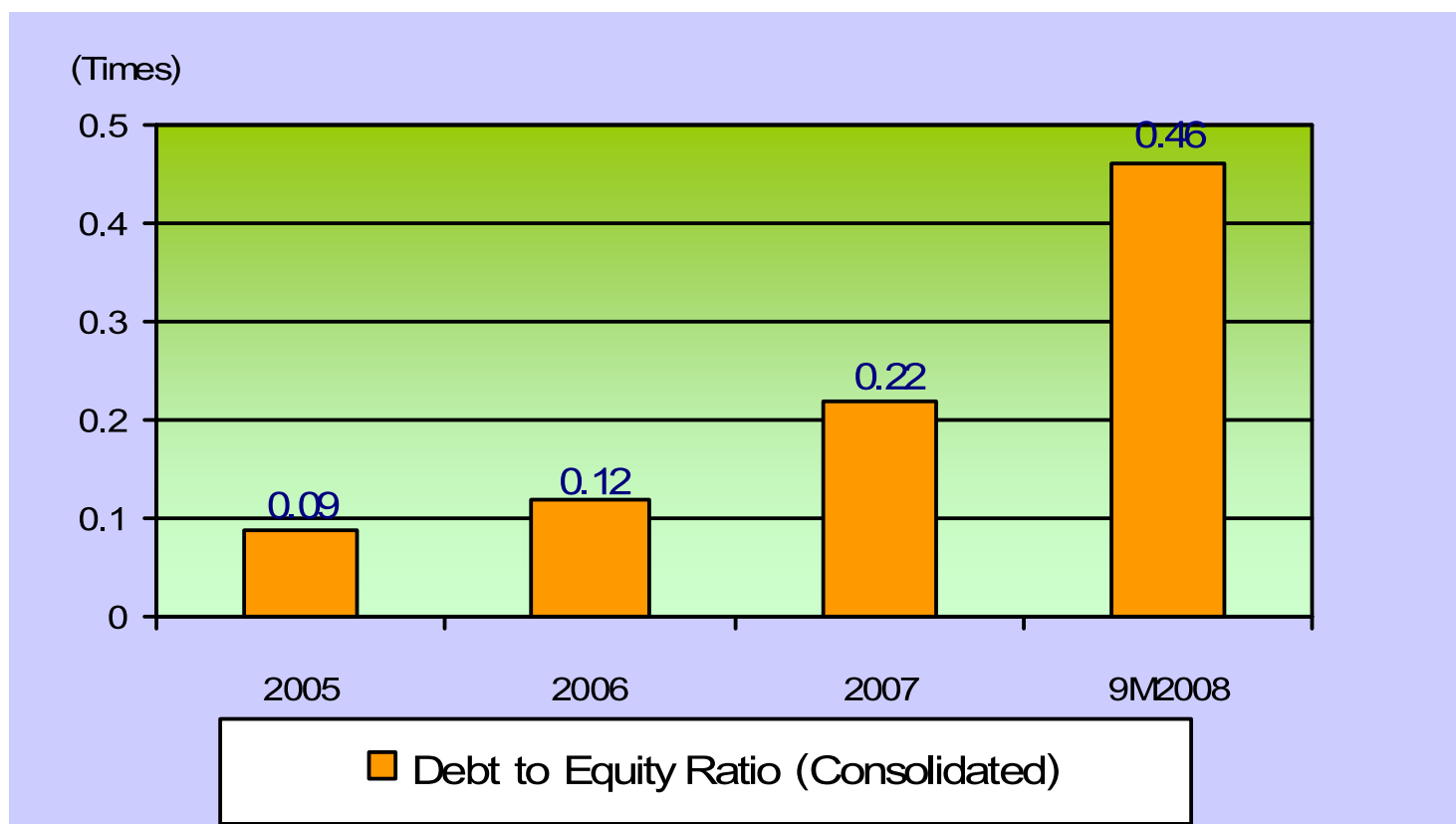
Raw Materials = Plastic Clay, Kaolin, Feldspar, Alumina



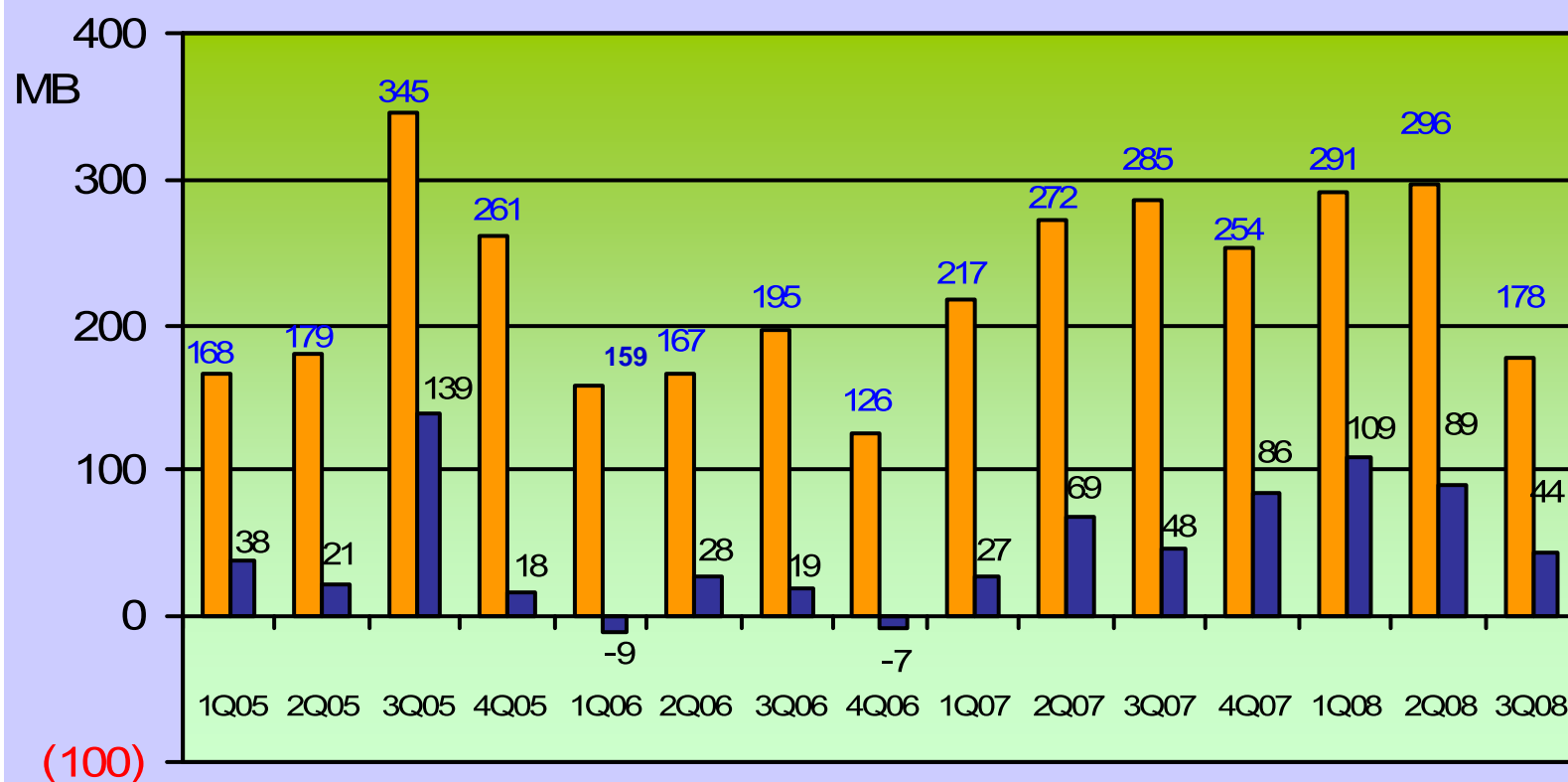
Performance of AI (Consolidated)



Consolidated: Debt to Equity



Insulators : Revenue and Net profit

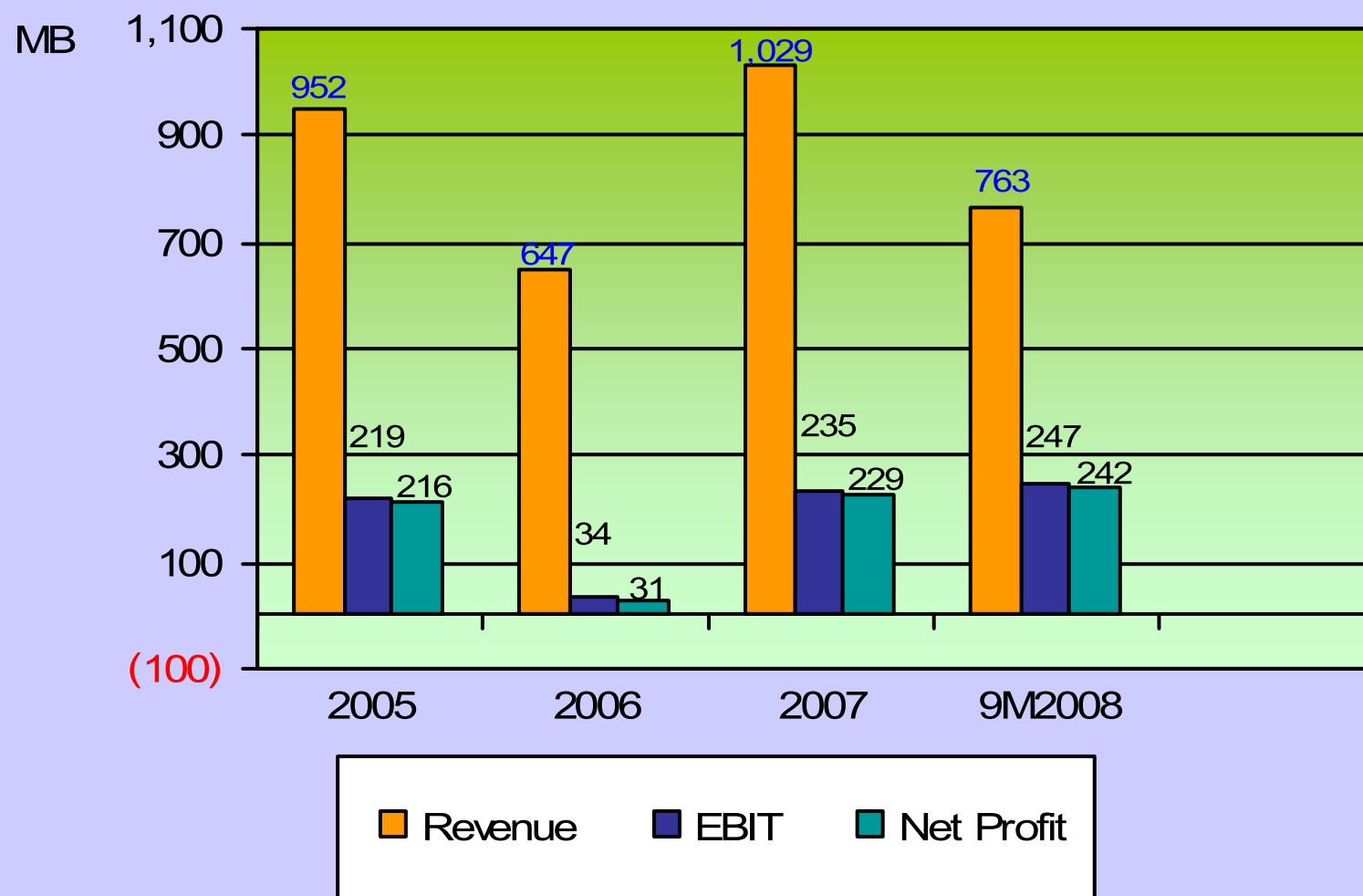


(100)

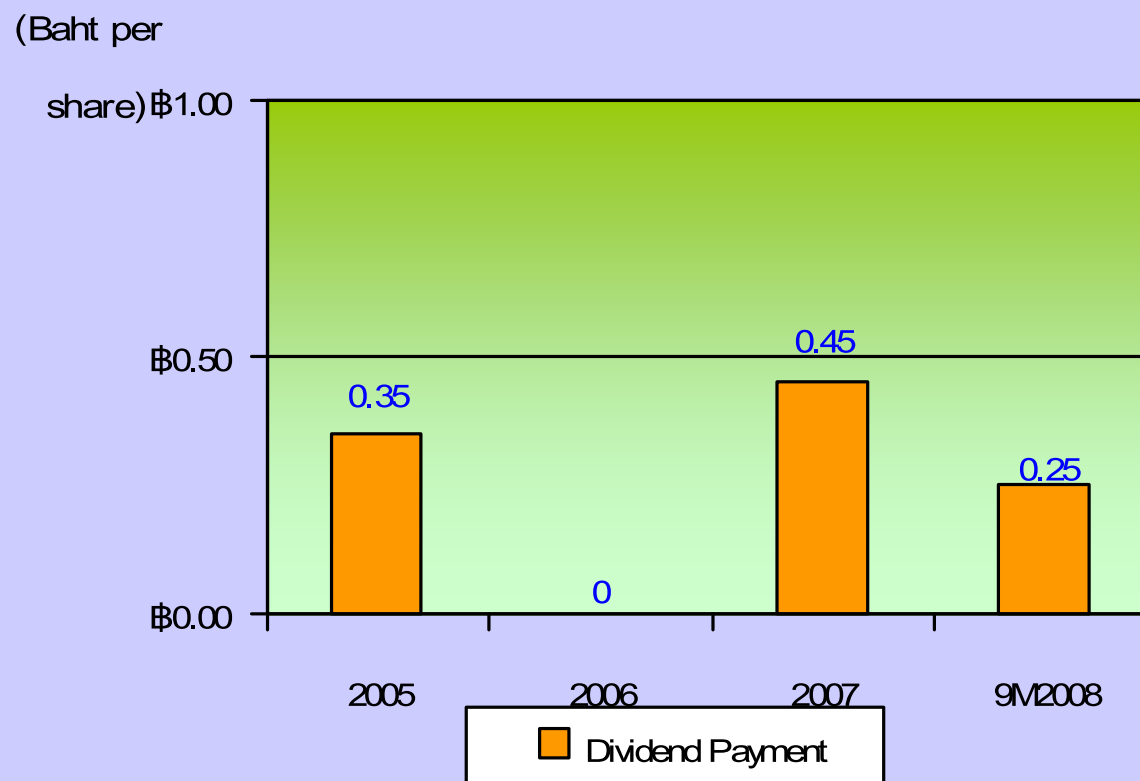
Revenue

Net Profit

Insulators: Performance



Dividend Payout Summary



Payout Ratio	81%	0%	97.8 %	51.6%
---------------------	------------	-----------	---------------	--------------

Dividend Policy: Company and subsidiary have the policy to pay the dividend to the shareholder each operation year, and not less than 40% of the net profit after tax and legal reserved. The dividend pay out is depend on the investment of the new project in the future.



3Q2008 Highlights

- ✦ Lower demand of Insulators, some of power expansion projects has been delayed, and postponed for both utilities and private sector.

Outlook

- ✦ Recession, but government spending is enforce.
- ✦ Lower demand of Insulators for utilities and private sectors through out next year.
- ✦ Challenges of high energy for LPG and raw materials cost.



PPC Insulators & Group

Asian Insulators PLC.



PPC Asian Insulators Company Limited



Location	99/9 Moo 2, Asia Highway Rd., Km. 122-123, Banmor, Promburi, Singburi 16120 Thailand
Prod Capacity	3,500 tons per annum
Paid-up Capital	263 million Baht
Stake	25.10%
No. of employees	300 persons.
Investment Privileges	<p>Thailand's Board of Investment incentives (Zone 3), commencing from January. 2005;</p> <ul style="list-style-type: none">✦ Corporate income tax exemption for 8 years and 50% reduction for the next 5 years.✦ Dividend gained from the business is exempted from the corporate income tax calculation within the 8-years tax exemption period.



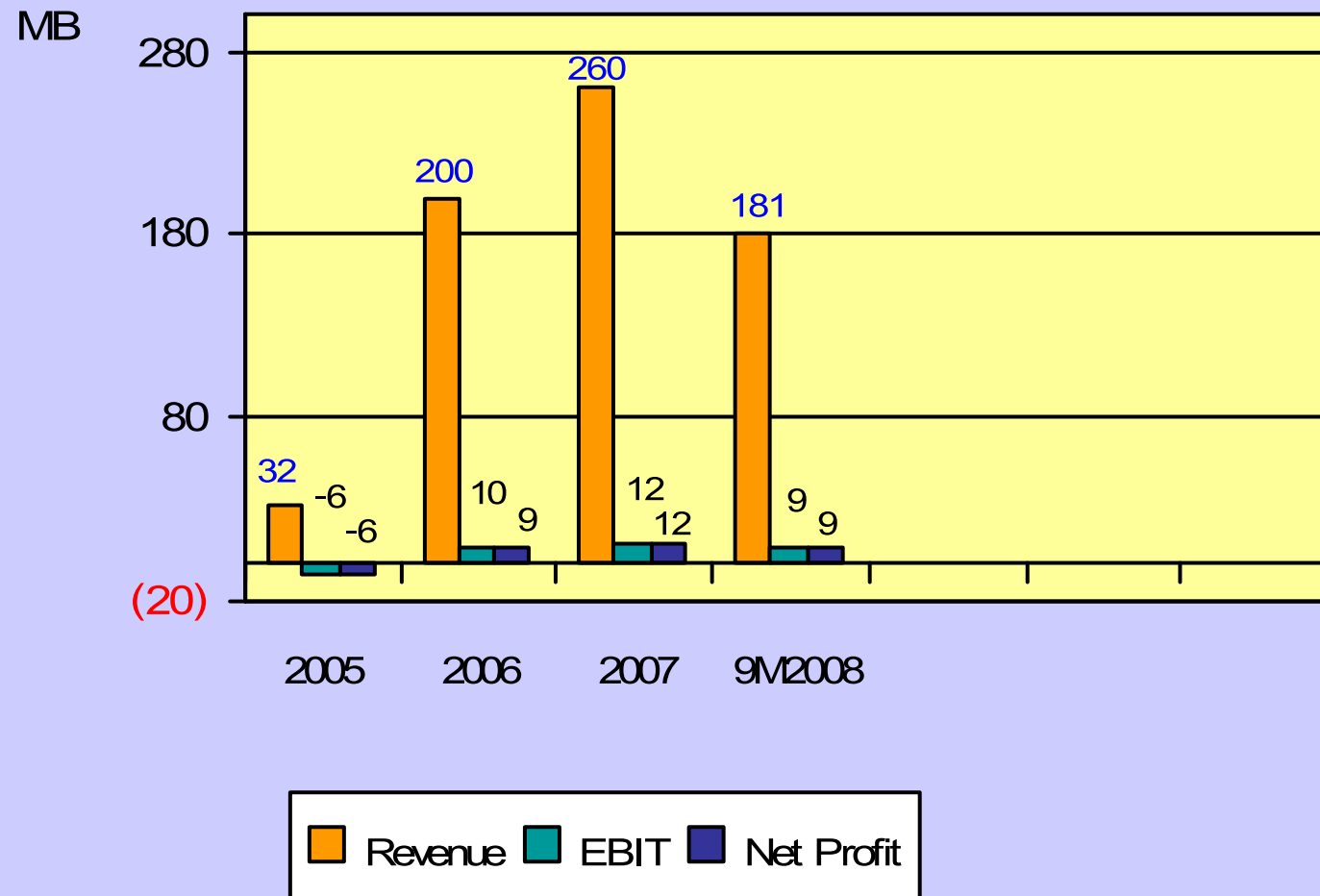
Products.



AI Engineering Services Company Limited



Engineering: Performance





3Q2008 Highlights

- ✦ Construction materials have been managed for fixing the prices thought out the project.
- ✦ Commissioning and hand over stages of the existing project.

Outlook

- ✦ Lower construction materials cost.
- ✦ New contracts to be award.

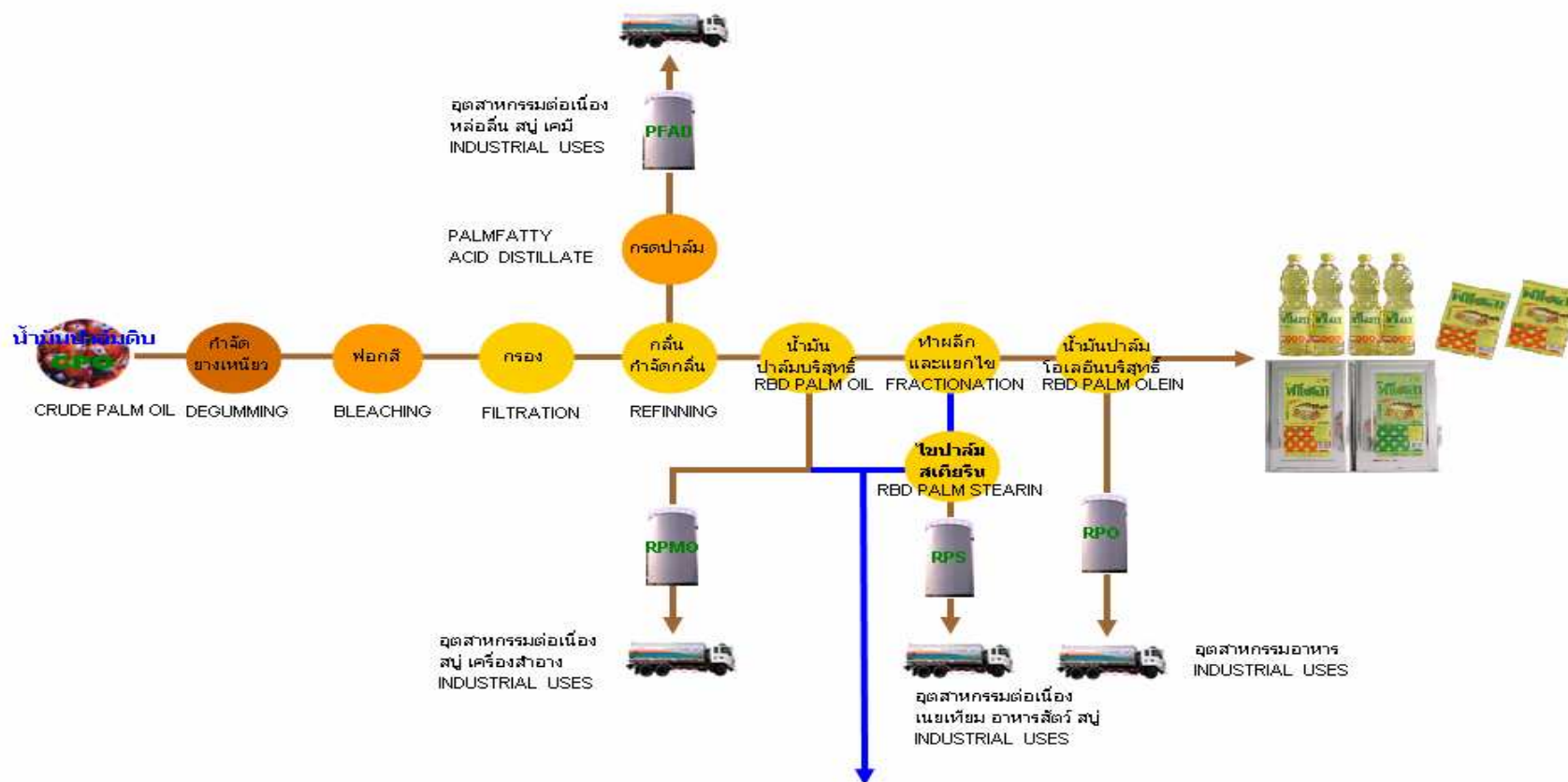
AI Energy Company Limited



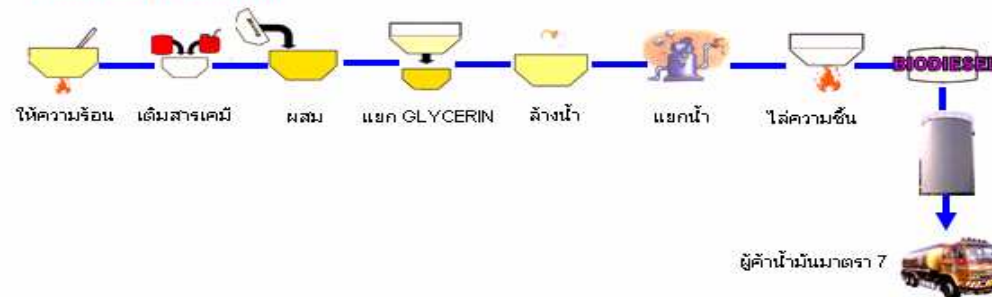
- Vegetable Oil
- Bio Diesel (B100)



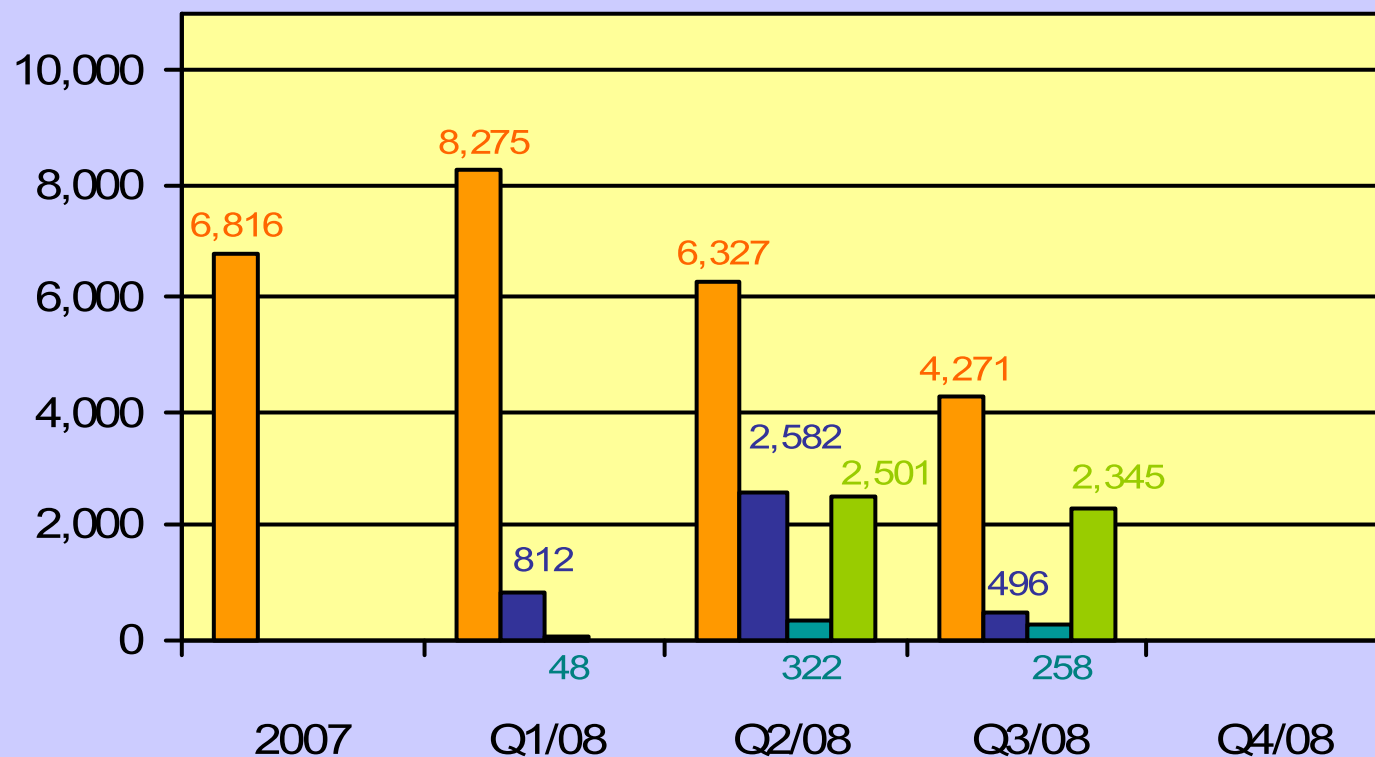
Bio Diesel and Refined Palm Oil Production Process



BIODIESEL PROCESS

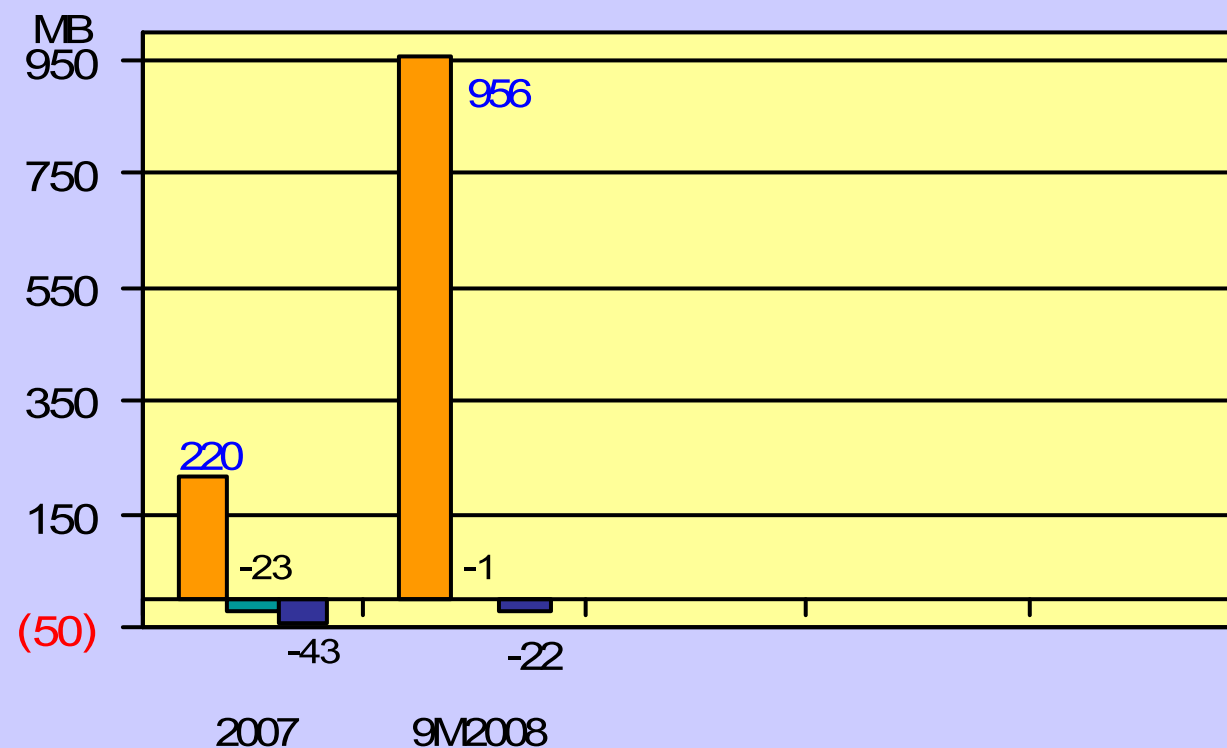


Bio Diesel: Sales Volume



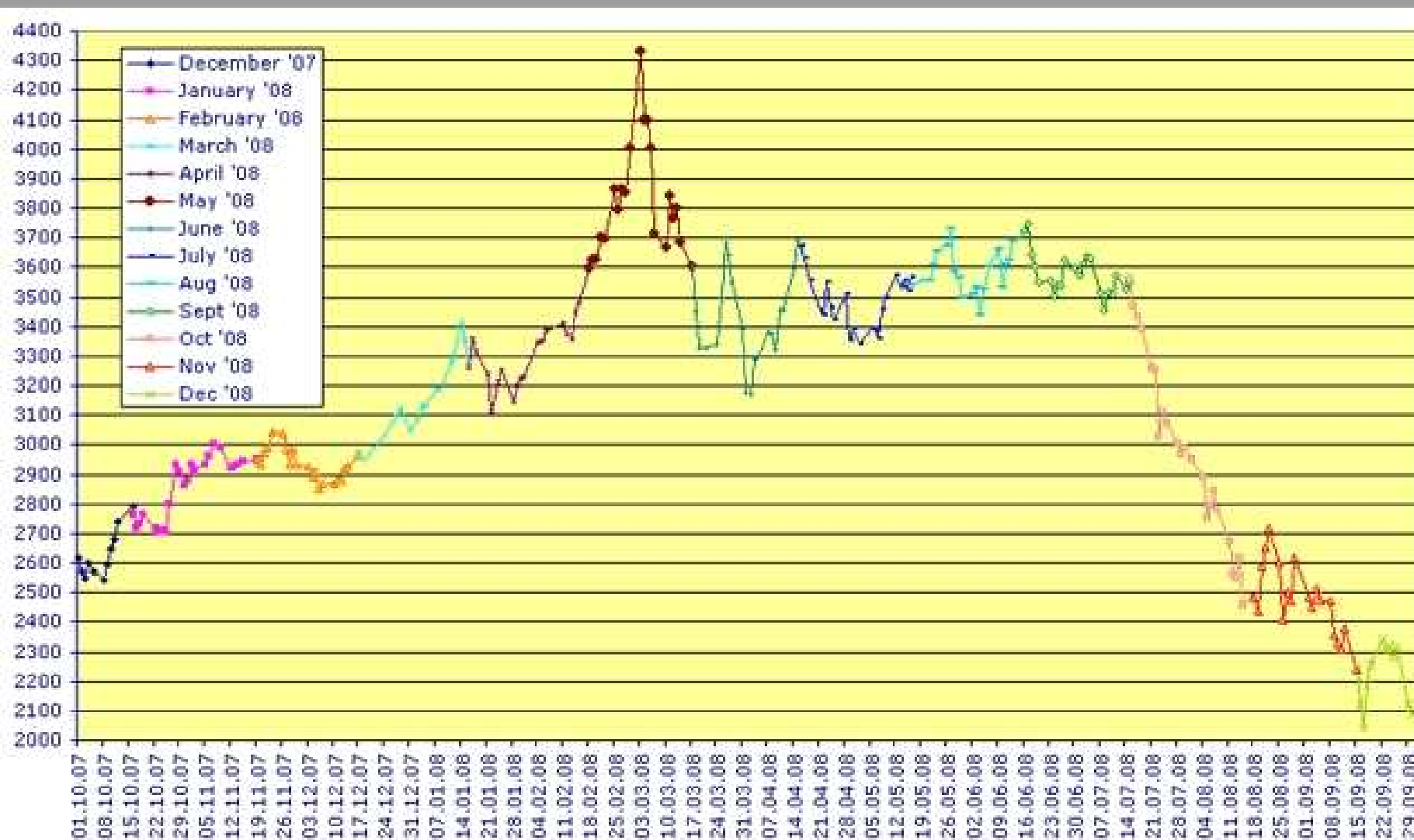
■ B100 (x1000 Litres) ■ Glycerin (x1000 Kg) ■ Palm Fatty Acid (x1000 Kg) ■ Olein (x1000 Kg)

Bio Diesel and Vegetable Oil : Performance



Revenue EBIT Net Profit

Crude Palm Oil Price



Price : Malaysian Ringgit



3Q2008 Highlights

- The demand of Bio Diesel (B100) was decreased and continue decreasing, due to another alternative fuels and economic situation.
- Crude Palm Oil price is fluctuating and world price was plunged, with inventories loss.
- Price formula for Bio diesel B100 = $(0.97) \text{ CPO} + (0.15) \text{ MtOH} + 3.32$
- Vegetable oil product (Pamola brand) with the average output 30,000 liters per day for consumers and industrial use.

▪

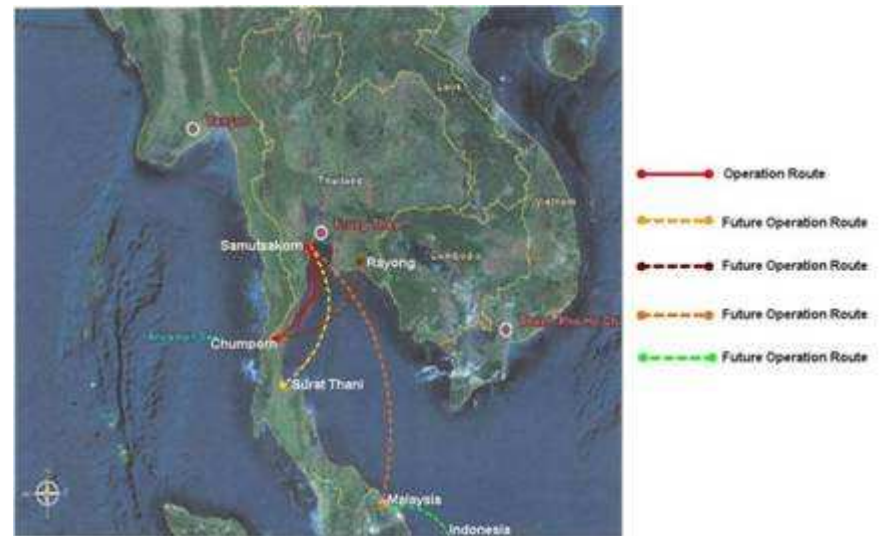


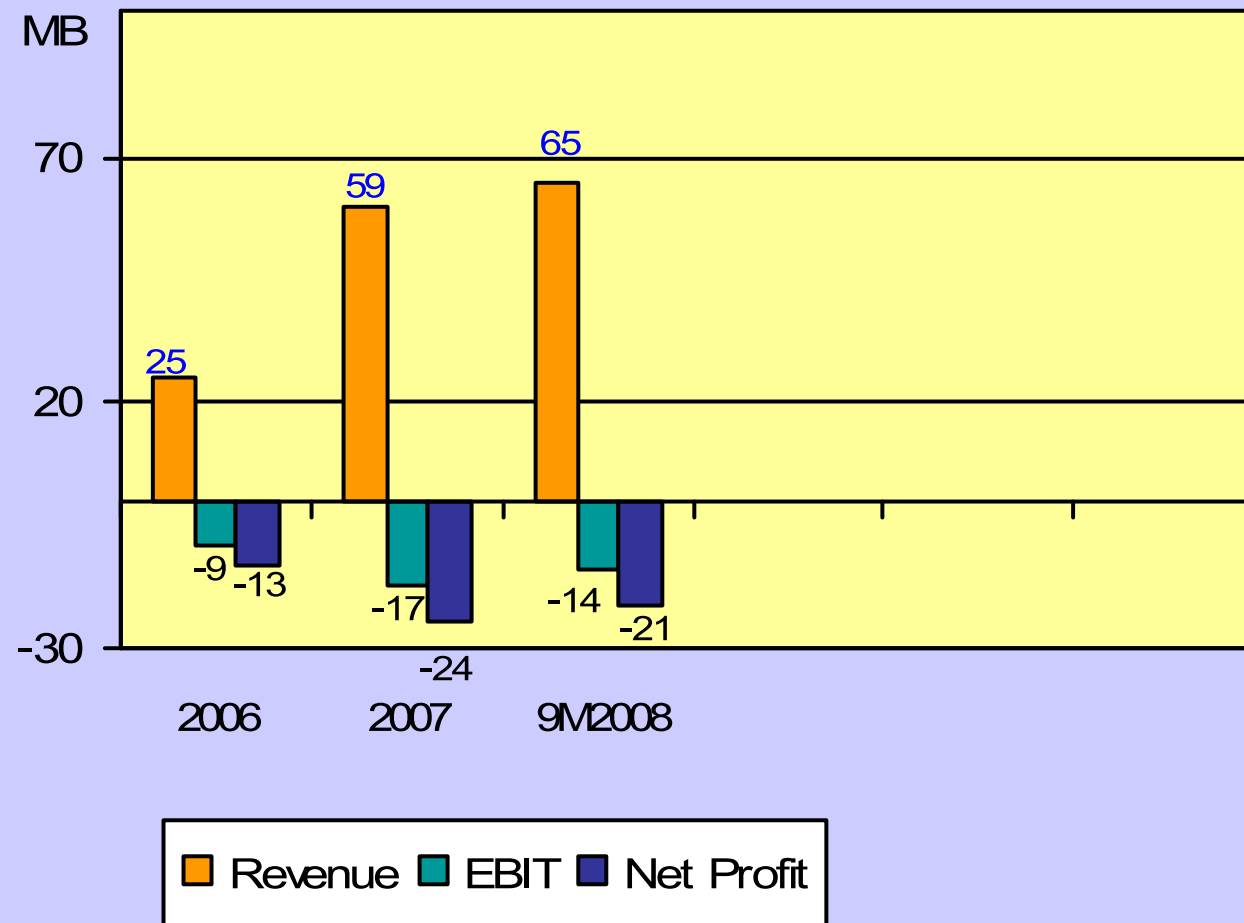
Outlook

- ✦ The demand of Bio Diesel (B100) was decreased and continue decreasing, due to another alternative fuels and recession.
- ✦ Demand of “Pamola brand” Vegetable oil in the canned, bagged and bottled for both local and export markets.
- ✦ Vegetable oil sell volume is expecting to increase to average 150,000 liters per day by 4Q2008.



AI Logistics Company Limited







3Q2008 Highlights

- ✦ The utilize capacity about 60% for time charter and freight charge.
- ✦ Average freight charge is USD 27 per tonnage of cargo.

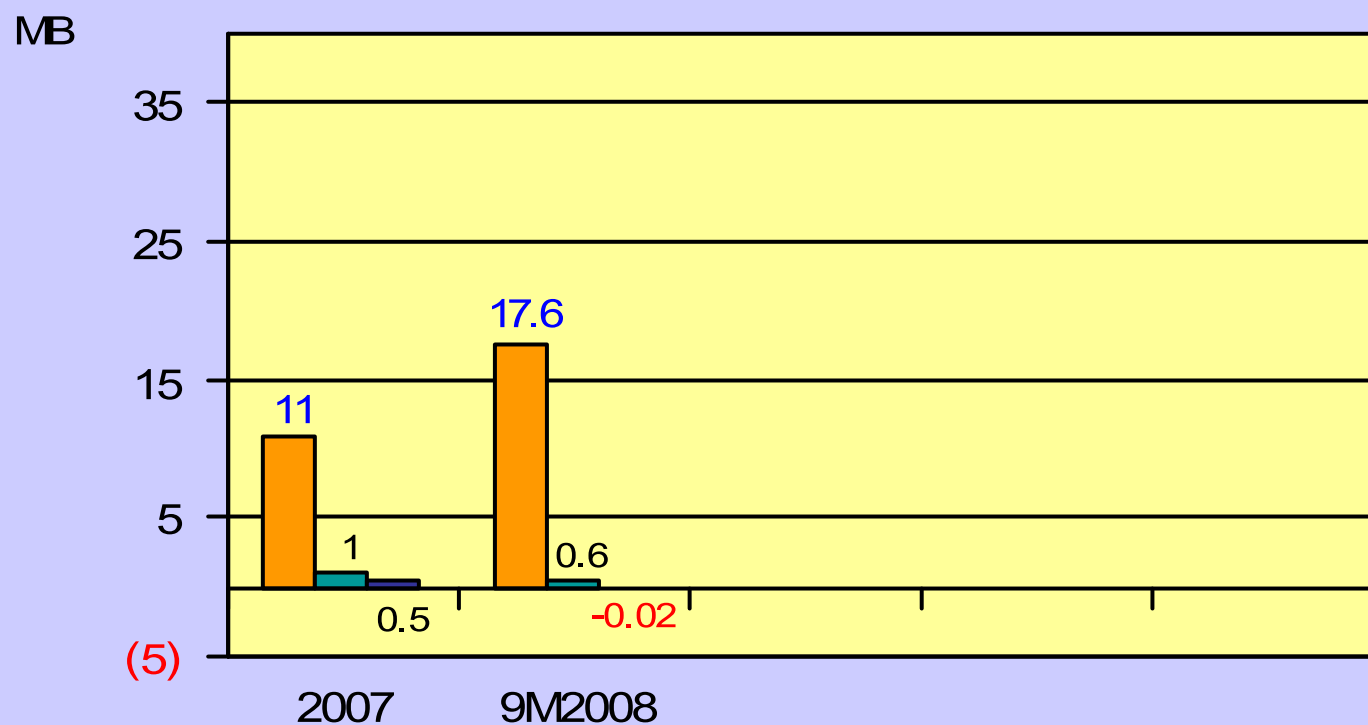
Outlook

- ✦ Lower utilization, due to the demand of ship tankers decreased.
- ✦ Double hull for the ship tank for transport crude palm oil, Olein as per regulation of ASEAN countries.

AI Ports and Terminals Company Limited



Ports and Terminals: Performance



Revenue EBIT Net Profit



3Q2008 Highlights

- ✦ Ports services and sell the ice cube to fishing industry at Samut Sakorn province.
- ✦ Construction begin for tanks farm and port at Samut Sakorn province with 10 million liters capacity of Crude Palm Oil, and expecting to provide the services partially for internal and external customers in Apr-09.
- ✦ The permission license has been granted for jetty and tank farms construction at Chumporn province.
- ✦ Construction begin for tanks farm and port at Chumporn province with 20 million liters capacity of Crude Palm Oil, and expecting to provide the services partially for internal and external customers in Apr-09.



Questions and Answers

**Contact : Khun Thanit Thareratanavibool
ir@asianinsulators.com Tel.: 02-517-1451
<http://www.asianinsulators.com>**



The information, statements, forecasts and projections contained herein reflect the Company's current views with respect to future events and financial performance. These views are based on assumptions subject to various risks. No assurance is given that these future events will occur, or that the Company's assumptions are correct. Actual results may differ materially from those projected.